



# TOWN OF KERNERSVILLE COMMUNITY RECREATION CENTER

October 6, 2020

# THE TEAM



**Rachel Nilson, AIA  
CPL**  
Project Manager  
Design  
Community Engagement



**William Moser, Jr., AIA  
CPL**  
Resource Principal  
Design  
Financial Modeling



**Harold Owen  
O&L Associates**  
Recreation Center  
Operations / Funding



**Mark Reaves  
Revington Reaves**  
Community Engagement

**Ernie Pages, CPRP  
Town of Kernersville**  
Parks and Recreation Director

**Kurt Pfeifer, PLA, ASLA, LEED AP  
Withers Ravenel**  
Site Design

# OUR PROCESS



COMMUNITY ENGAGEMENT



PROGRAMMING



CONCEPTUAL DESIGN / SITE DESIGN AND MASTER PLANNING



FINANCIAL MODELING

# OUR VISION

Kernersville seeks to become a desirable community and increase quality of life through innovative programming, cultural events, and providing aesthetic and safe facilities.

# WHAT WE DO

Dance  
Volleyball  
Stem Cooking  
Drama/Acting  
Karate  
Zumba

Fitness  
Basketball  
Archery  
Summer Camps  
Futsal  
...and more

# COMMUNITY ENGAGEMENT

6

focus group meetings

2

public engagement sessions

55+

focus group participants

2

interactive kiosks

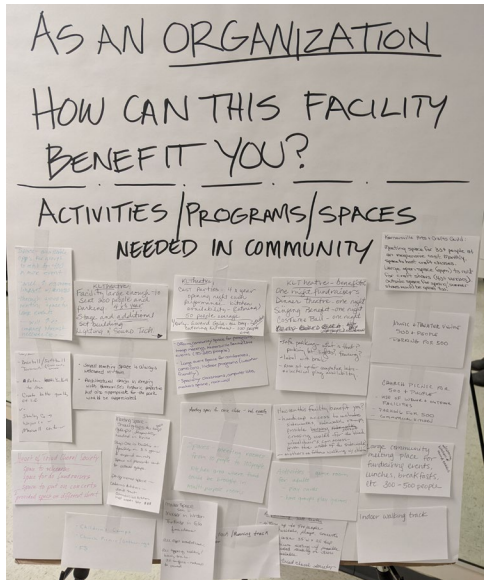
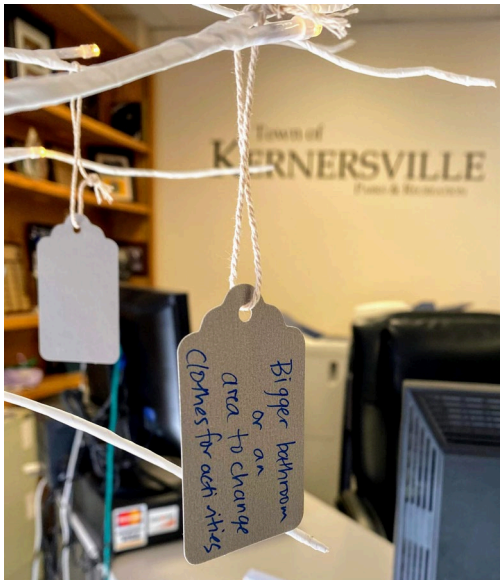
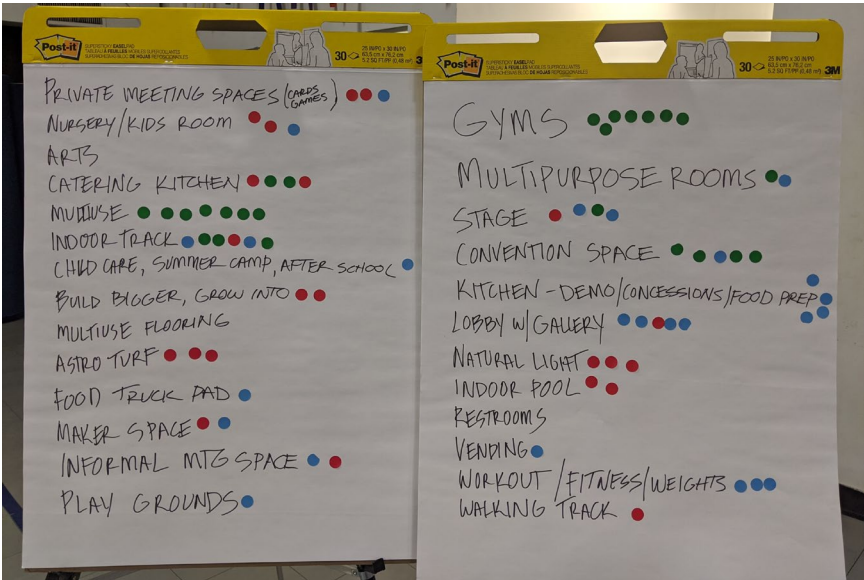
447

kiosk voters

ATHLETICS  
COMMUNITY SERVICES  
ADVISORY BOARD  
CIVIC CLUBS  
ELECTED OFFICIALS  
PARKS AND RECREATION STAFF



# COMMUNITY ENGAGEMENT





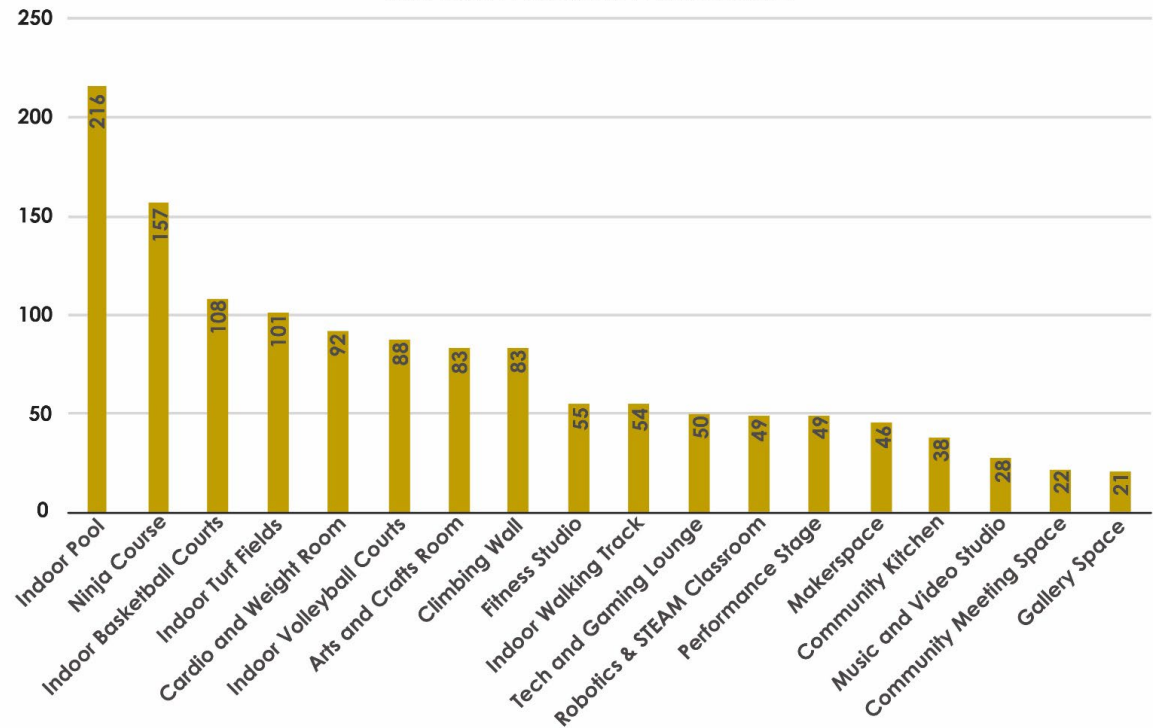
# WHAT THEY SAID

## TOP 3 RECREATION CHOICES



## RECREATION CHOICE RANKING

(total # of votes | 3 per participant | 447 total participants)



447 PEOPLE  
VOTED!

**8,000 sf**  
per basketball court

**700+**  
seated people

**10-200**  
person meeting spaces

**Department Legend**

- Administrative
- Community
- Fitness
- Support

**Room Schedule:**

Room Name	Area (sq ft)	Department
CLIMBING WALL	100' x 100'	Fitness
PE COURT GYM	30' x 70'	Community
GYM STORAGE	100' x 100'	Support
STAGE	200' x 70'	Community
STAGE STORAGE	50' x 70'	Support
RESTROOM	50' x 70'	Support
DRESSING RM / FITNESS	50' x 70'	Support
WOMEN'S	20' x 70'	Support
STOCK	50' x 70'	Support
CLASSROOM	30' x 70'	Community
CLASSROOM	40' x 70'	Community
FAMILY REST	30' x 70'	Support
TRAINING ROOM	50' x 70'	Support
KITCHENETTE	30' x 70'	Support
OFFICE 3	30' x 70'	Administrative
TEAM WORK AREA	50' x 70'	Administrative
TEAM CONFERENCE	30' x 70'	Administrative
DIR. OFFICE	10' x 70'	Administrative
OFFICE 2	10' x 70'	Administrative
OFFICE 1	10' x 70'	Administrative
WORK ROOM	10' x 70'	Administrative
RECEPTION	10' x 70'	Administrative
LOBBY	100' x 100'	Community
DEV.	10' x 70'	Support
MEN'S ROOM	10' x 70'	Support
MEN'S ROOM	10' x 70'	Support
KITCHEN	10' x 70'	Support
JAN.	10' x 70'	Support
PANTRY	10' x 70'	Support
STORAGE	10' x 70'	Support
FAMILY REST	10' x 70'	Support
WOMEN'S	10' x 70'	Support
MEN'S	10' x 70'	Support
GENERAL STORAGE	10' x 70'	Support
13. CLOSET	10' x 70'	Support
REC.	10' x 70'	Support
TEAM LOCKERS	10' x 70'	Support
STOCK	10' x 70'	Support
TEAM LOCKERS	10' x 70'	Support

**Notes:**

- UP
- DOWN
- CLIMBING WALL
- PE COURT GYM
- GYM STORAGE
- STAGE
- STAGE STORAGE
- RESTROOM
- DRESSING RM / FITNESS
- WOMEN'S
- STOCK
- CLASSROOM
- CLASSROOM
- FAMILY REST
- TRAINING ROOM
- KITCHENETTE
- OFFICE 3
- TEAM WORK AREA
- TEAM CONFERENCE
- DIR. OFFICE
- OFFICE 2
- OFFICE 1
- WORK ROOM
- RECEPTION
- LOBBY
- DEV.
- MEN'S ROOM
- MEN'S ROOM
- KITCHEN
- JAN.
- PANTRY
- STORAGE
- FAMILY REST
- WOMEN'S
- MEN'S
- GENERAL STORAGE
- 13. CLOSET
- REC.
- TEAM LOCKERS
- STOCK
- TEAM LOCKERS





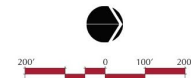
# PREVIOUS MASTER PLAN



ILLUSTRATIVE MASTER PLAN

## IVEY M. REDMON SPORTS COMPLEX

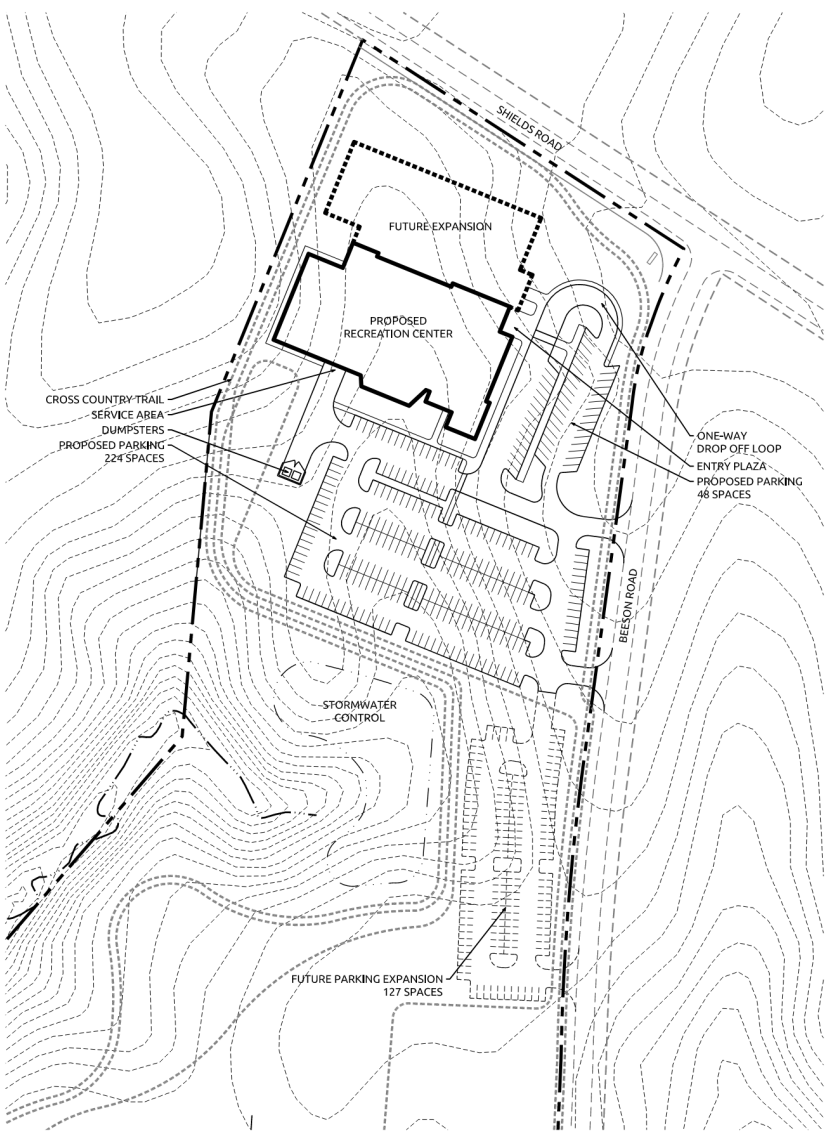
KERNERSVILLE, NORTH CAROLINA



WITHERS & RAVENEL

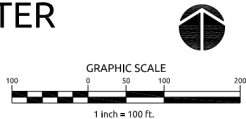


# SITE DESIGN AND MASTER PLANNING

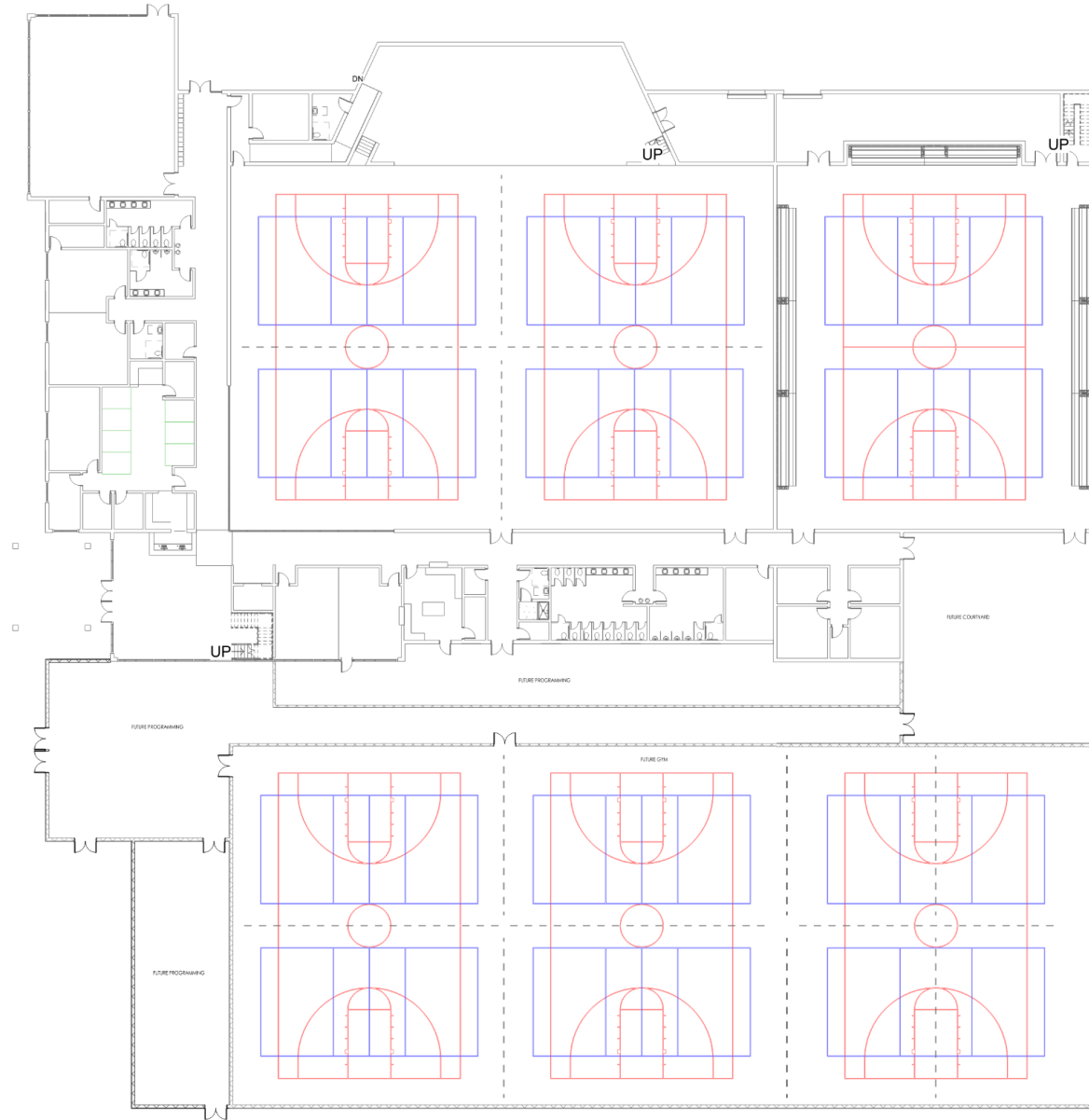


## IVEY REDMON RECREATION CENTER

KERNERSVILLE, NC  
SCHEMATIC SITE PLAN  
PROJECT #2190904  
DATE: 05.06.2020



# FUTURE EXPANSION



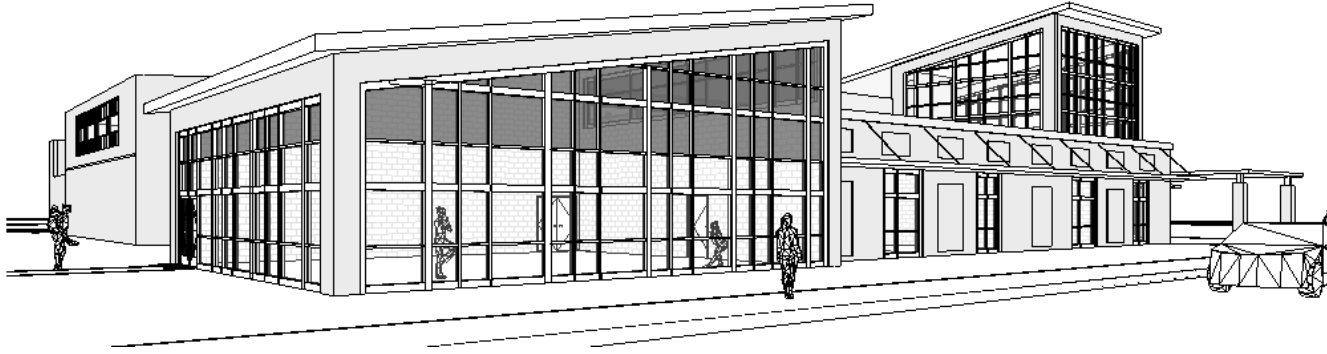


# CONCEPTUAL DESIGN

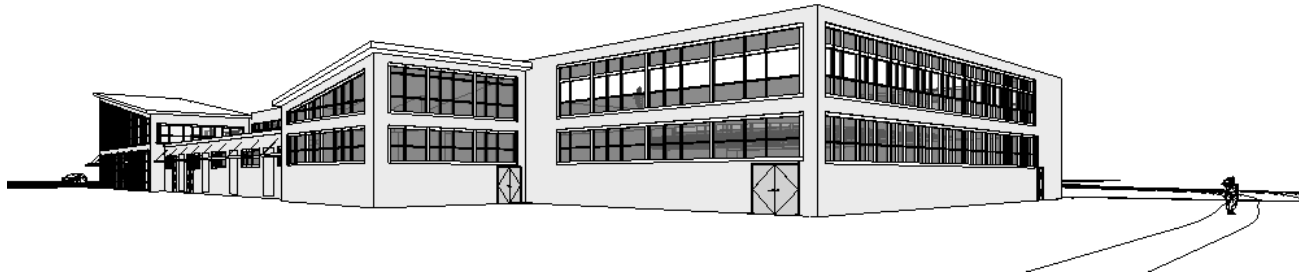




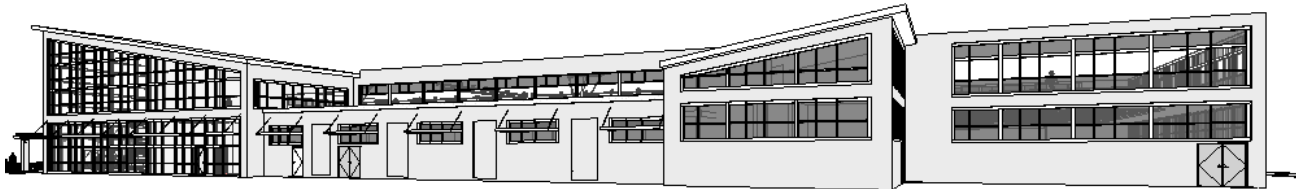
# CONCEPTUAL DESIGN



VIEW FROM NEW PARKING LOT AND DROP-OFF

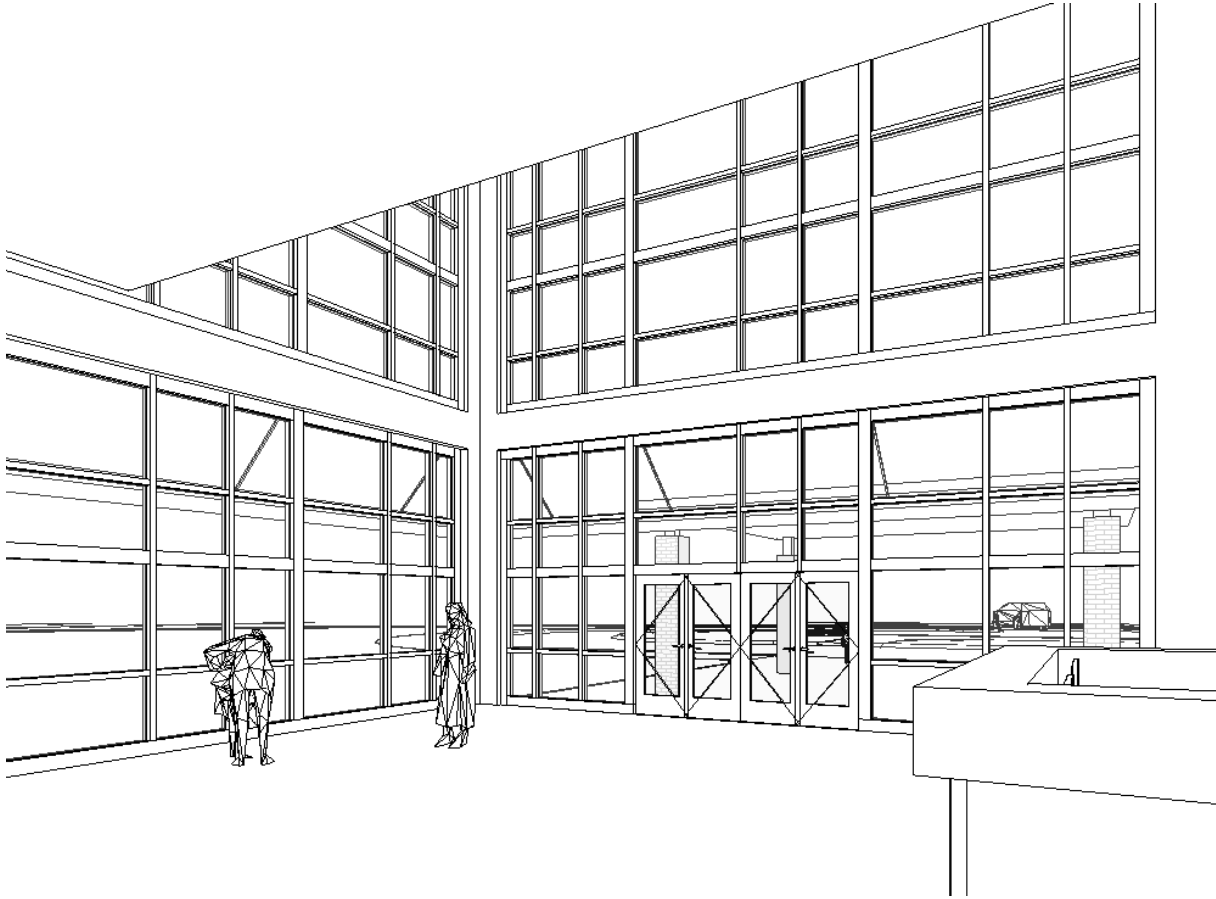


VIEW FROM SHIELDS ROAD APPROACHING PARK



VIEW FROM SHIELDS ROAD

# CONCEPTUAL DESIGN

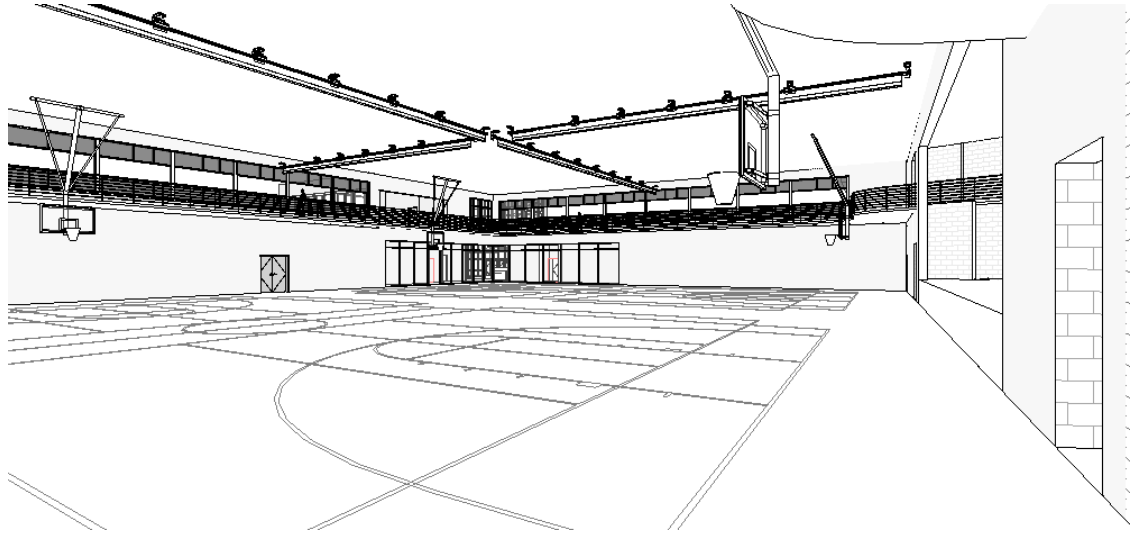


VIEW FROM LOBBY LOOKING AT ENTRANCE

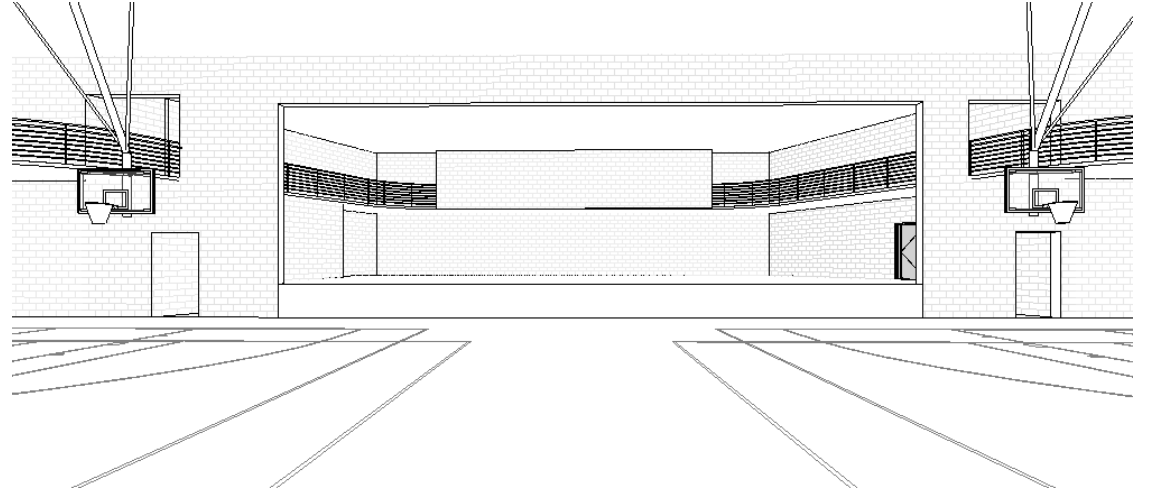


VIEW FROM ENTRANCE INTO LOBBY

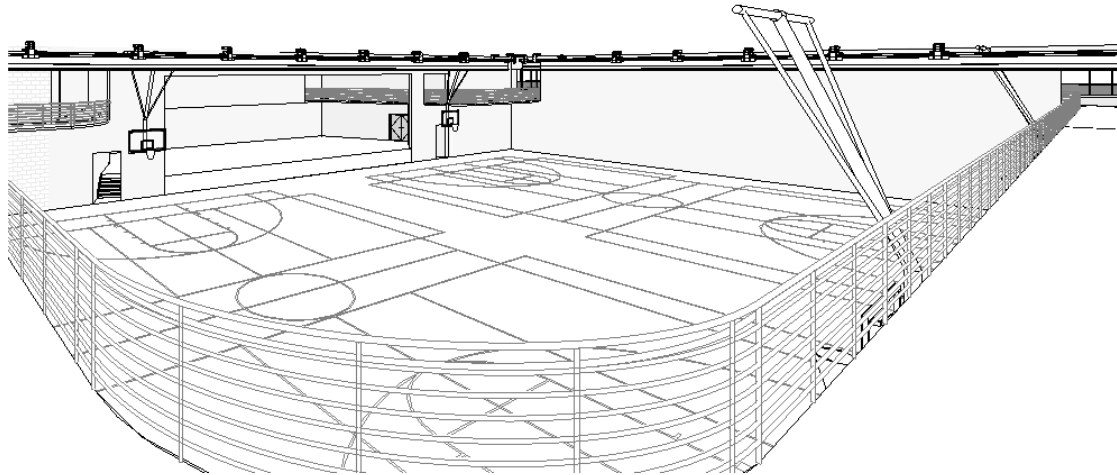
# CONCEPTUAL DESIGN



VIEW AT DOUBLE GYMNASIUM



VIEW TOWARD STAGE



VIEW FROM WALKING TRACK TO BASKETBALL COURTS

# THANK YOU

